

● **What's On**

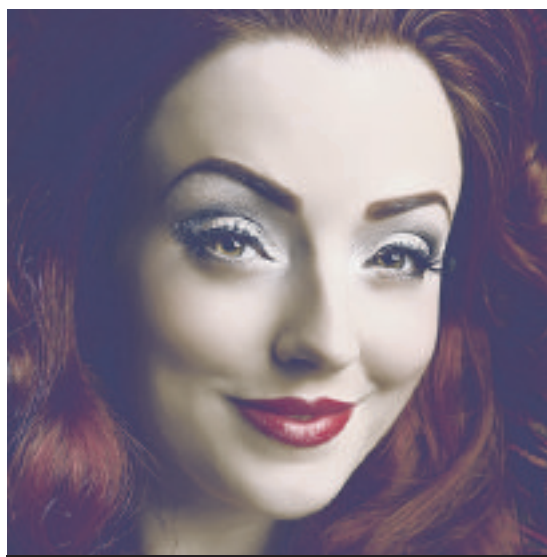
# Emily's star will continue to shine

**MASKED BALL**

**BY SAMMY JONES**  
sammy.jones@jpress.co.uk  
@sammyjonespress

**The lady who had quite possibly caused a few fellas to sit up and take notice of this week's GO! section is Miss Polly Rae.**

On Saturday night, the trim-waisted, luscious locks and smouldering eyes will be hard at work here in the city – hosting the annual Masked Ball. Polly both created and stars in the West End's Hurlly Burly Show, a burlesque extravaganza. She sees herself as a cross between Jessica Rabbit and Gypsy Rose Lee, and has worked with artists as varied as Kasabian and Westlife. Kylie Minogue is a fan too. Miss Rae will compere Saturday's event, joining a wealth of great artists, all giving their time free, in support of this year's chosen charity, Emily's Star. Mad Mods and Englishmen know how to hammer a great tune home, and will engage with their rock and mod



**MISS POLLY RAE:** Your host at Saturday's grand masked ball

movements. A bit like you can't not chew a Rowntrees fruit pastille, neither can you keep your tootsies still when these boys are hard at work on the stage. They will headline the event, being held at the Jurys Inn, but they won't be alone, with soul-funk fusionists The Grooves-

tars covering class tracks by Stevie Wonder and Chic. You get the idea. When she began singing, Michelle Nova had yet to break into her teens, and showed off her style with the English National Opera. These days though, hers is a set grinding up jazz and rock

'n' roll to sterling effect. DJ Jobi-Wan is already doing swell on the hard to crack London scene, and returns home to play this worthwhile affair, so tip your ears his way too. Add in a string quartet playing live as you navigate the red carpet upon arrival, a fun casino and charity auction and you are looking at a decidedly classy night out. It's a little bit different, and a great opportunity to throw caution to the wind, and go grab a good time. In the process Emily's Star\* will be furnished with all important cash. \*Emily's Star was set up in memory of Emily Elizabeth, a brave little girl who was born with Edward's Syndrome. She lived for just 26 days, before becoming 'an angel in the sky'. Determined that her memory will live on, and eager to see some good come from a truly terrible time, her parents set up Emily's Star to raise funds for the Children with Complex Needs Nurses and families across the UK. Purchase a ticket and help to make a real difference. Visit [www.mk-maskedball.co.uk](http://www.mk-maskedball.co.uk)

# Help Hula to help animals

**OPEN DAY**

It's unfortunate, but not surprising that rescue centres are struggling to make ends meet – battling a tide of irresponsible owners and abuse to help our animal friends. Their efforts make such a difference to creatures who otherwise would be condemned to miserable lives bereft of love, comfort and safety. Hula Animal Rescue is one of the most prominent in our area, and on Sunday volunteers will once again throw open the doors of the

centre in Aspley Guise, in the hope that you will spend some pennies and pounds to aid the cause. The Summer Open Day will run between 1pm and 4pm, giving you plenty of time to spend a few bob at the car boot sale, and over at the bazaar, and you can enjoy some cheeky, yummy refreshments while on site. Dogs are welcome, so long as they are on leads and in a good mood, and of course you get to see the animals in need of forever homes. Admission is £2 per adult with accompanied children going free.



# Open doors for St Lawrence

**OPEN DAY**

Friends of St Lawrence Church are opening the doors of the ancient holy house on Saturday to celebrate the Feast Day of St Lawrence the Martyr, and you are invited. The Broughton-based church – which raised a £1,000 at a similar event recently – will be displaying its famous wall paintings for all to see, and tours will be given. Refreshments will also be available, or you could opt into the village picnic, by contributing to the 'bring and share lunch'. Everyone will be made welcome between 10am and 4pm and admission is free.



**ST LAWRENCE CHURCH:** Chance to view historic wall art

> In Campbell Park this weekend, the super successful Made in MK summer of events has another great way to spend your day, with an Arts

and Cultural Festival being hosted on the green side on Saturday and Sunday. The celebration of the diverse art and culture that exists in our vibrant city is yours to see for free.

Don't forget that at Bletchley Park, Family Fun Days are running each and every Wednesday. For more details, visit the website: [www.bletchleypark.org.uk](http://www.bletchleypark.org.uk)

> At Milton Keynes Gallery, the summer exhibition MK Calling is continuing to offer classy coverage to lots of city-based artistic talents. From the traditional paint on canvas to the intricate art of tattooing and everything in-between, the gallery has been going great guns to give our talent a platform. On Saturday, 26 musicians will be stepping forward and plugging in to deliver the UK premiere of MK musician and composer Peter J Taylor's cunningly titled Music for 26 Guitars. Doors open at 7.30pm. Call MK 676900 for more details.

# Jungle-tastic activities for holidaying little mites...

**WHAT'S ON ROUND UP**

Keeping children occupied during the holiday's can be a challenge and a half – but MK Play Association is on hand to help shoulder the burden – this Wednesday it presents Woodland Play in Linford Wood, between 2 and 4pm. Visit [www.mkpa.org.uk](http://www.mkpa.org.uk)

> Back in Woburn Sands, Frosts Garden Centre has more activities to keep little ones occupied, with free jungle-tastic activities and games from 11am on Monday. On Wednesday, for the nominal fee of £2.99, youngsters can make their own jungle animal finger puppet, between 10am and 4pm.

> Westbury Arts Centre wel-

comes three recent graduates on to its Graduate Artist Residency scheme this month. Matt Tyler, Andrea Willette and Julia Le Fevre were chosen from applicants across the country to undertake a three month residency at the centre this summer. The panel decided that the trio showed creative excellence, interesting use of materials and a strong desire to pursue a career in the arts. Their work will be on display at the Arts Centre in Shenley Wood during an exhibition from Saturday, for the rest of the month. The public can view on Saturdays and Sundays between 11am-4pm. Visit at other times by appointment.

> Men of MK are being urged

to embrace the spirit of singing and consider joining a city choir. MK Community Choir has come from humble beginnings but the mixed voice group now boasts 100 members. Musical director Craig McLeish leads them through a wide ranging repertoire including pop, world music, folk, musical theatre and classical. Craig would like to extend the tenor and bass sections so is welcoming men along in the autumn to see if the choir is for them. The group meets to sing weekly during term-time at Stantonbury church and produces two concerts a year. Go to [www.miltonkeynescommunitychor.org](http://www.miltonkeynescommunitychor.org) or phone MK 563760.

# Petticoats go flying in musical

**MK THEATRE**

**BY GEORGINA BUTLER**  
georgina.butler@jpress.co.uk  
@georginalbutler

**Jukebox musical Dreamboats and Petticoats returns to Milton Keynes Theatre from Monday with a soundtrack full of popular songs from music's golden era.**

It's 1961 and Bobby, an awkward but talented teenager, is auditioning for a band at the local youth club. He is a whisker away from getting the part but is superseded by the last minute arrival of the cool and confident Norman.

Amid the trials and tribulations of teenage life, the youth club performers pen songs as entries for the first national song writing competition – and Bobby and Norman also compete for the attentions of

**'Mark will step out on stage as himself... offering even more pop for your pounds'**

the gorgeous Sue. But when Bobby discovers that shy Laura has a secret talent on the piano, love and rock 'n' roll fame really take centre stage...

The show features classic tracks from Roy Orbison, The Shadows, Eddie Cochran, Billy Fury and many more, with songs including Let's Dance, To Know Him is to Love Him, Shaking All Over, Bobby's Girl and Let It Be Me, sure to have you bobbing in your seat. Musical legend Mark Wynt-

er is reprising his celebrated West End role on tour, playing the father of the wannabe pop star.

He is returning to his musical roots by joining the cast to revisit the magical time in the early 1960s when he made his professional debut as a recording artist.

He went on to have nine top 20 singles – including Venus in Blue Jeans, It's Almost Tomorrow and Go Away Little Girl and has had real success in musicals such as Phantom of the Opera, Cats and South Pacific.

Plus, every night for the finale of the production, Mark will ditch his character and step out on stage to perform his hits as himself (offering you even more pop for your pounds). Dreamboats and Petticoats comes to Milton Keynes Theatre from Monday, and through to Saturday, August 17. Call the Box Office on 0844 871 7652.



**JUKEBOX MUSICAL:** Mark Wynter joins the cast for Dreamboats and Petticoats which returns to Milton Keynes Theatre from Monday



● **Safari Park**



## Welcome to 'Meercat Manor' – have you met the prickles?

**DESERT SPRINGS**

**BY SAMMY JONES**  
sammy.jones@jpress.co.uk  
@sammyjonespress

The spanking new Desert Springs attraction has been given the thumbs-up at Woburn Safari Park – by the new inhabitants!

The residents moved in less than a fortnight ago and the mongoose, porcupines and meerkats are loving their special home.

There are three main areas which boast a hot rock area and termite mounds, where the meerkats can enjoy hunting for their dinner – tasty bugs, naturally. All the residents are able to

burrow into the enclosure – just as they would do in their natural habitats in Northern Africa, and the home has been created to enrich the lives of the animals and encourage natural behaviour of the troupe, prickle and mob.

Drew Mullin, general manager at Woburn Safari Park, said: "The residents of the new Desert Springs exhibit are all happily settling into their exciting new home."

And, what is good for our furry friends is good for you too – Desert Springs also has an undercover walkway through the centre of the exhibit, which gives visitors a perfect vantage point of the clever creatures, no matter what the great British weather may have in store!

For Safari Park opening hours and admission costs, visit [www.woburn.co.uk/safari](http://www.woburn.co.uk/safari)

